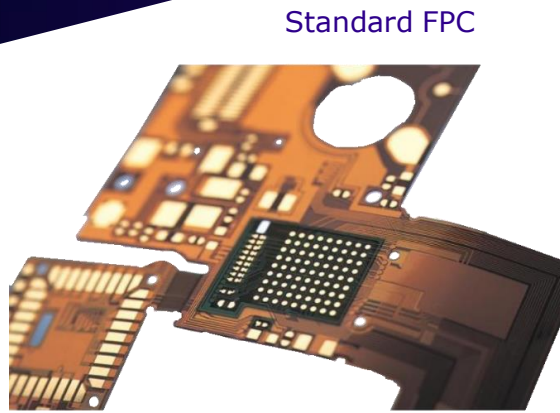


- High function Connection
- Space reduction

# FPC

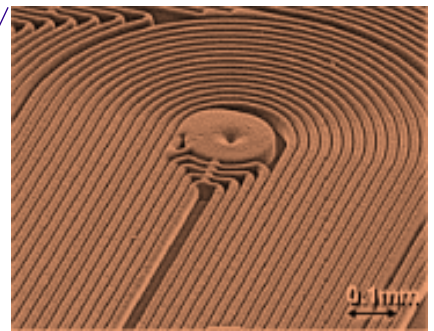
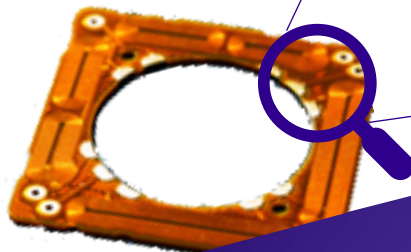
## Flexible Printed Circuits



FPC with components



Fine pitch  
Coil



### Product description:



FPC with SMD, Tape and other assemblies



Various connection options



Single layer, Double layer and Multilayer



High-grade material can endure  
-40°C to 150°C



Fine-pitch enables high-density  
and high aspect ratio circuit



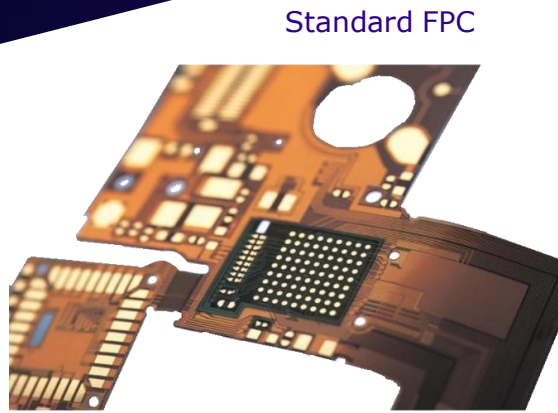
Contact person for  
further information:

Mr. Kotaro Umaba (SEPE)  
[umaba-kotaro@sei.co.jp](mailto:umaba-kotaro@sei.co.jp)

- Hohe Funktionalität
- Platzsparend

# FPC

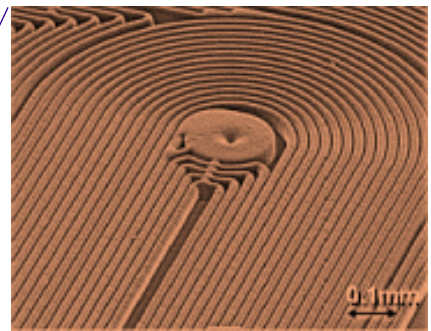
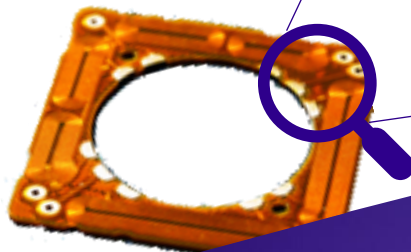
## Flexible Printed Circuits



FPC mit Komponenten



Fine pitch  
Coil



### Produktbeschreibung:



FPC mit SMD, Tape und mehr



Verschiedene  
Anschlussmöglichkeiten



Einlagig, zweilagig und mehrlagig



Hochwertiges material  
-40°C bis 150°C



Fine-pitch ermöglicht  
Leiterbahnen mit hoher Dichte  
und hohem Aspektverhältnis



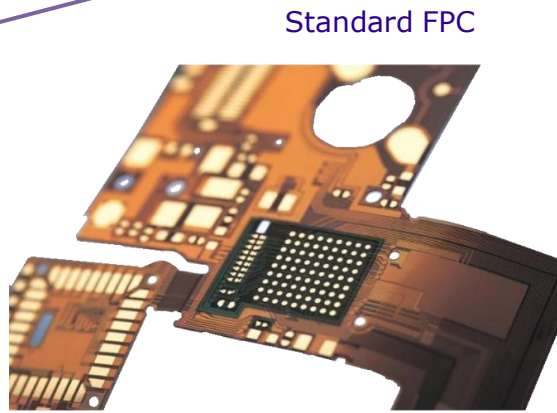
Ansprechpartner für  
weitere Informationen:

Hr. Kotaro Umaba (SEPE)  
[umaba-kotaro@sei.co.jp](mailto:umaba-kotaro@sei.co.jp)

- High function Connection
- Space reduction

# FPC

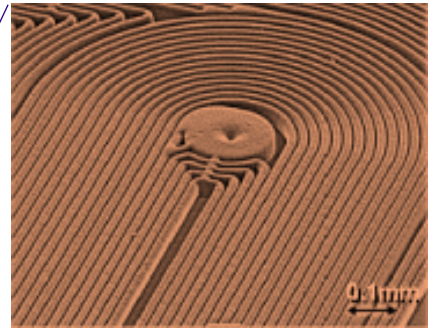
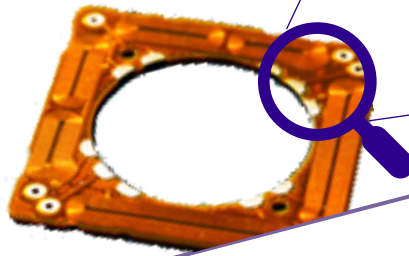
## Flexible Printed Circuits



FPC with components



Fine pitch  
Coil



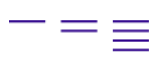
### Product description:



FPC with SMD, Tape and other assemblies



Various connection options



Single layer, Double layer and Multilayer



High-grade material can endure -40°C to 150°C



Fine-pitch enables high-density and high aspect ratio circuit

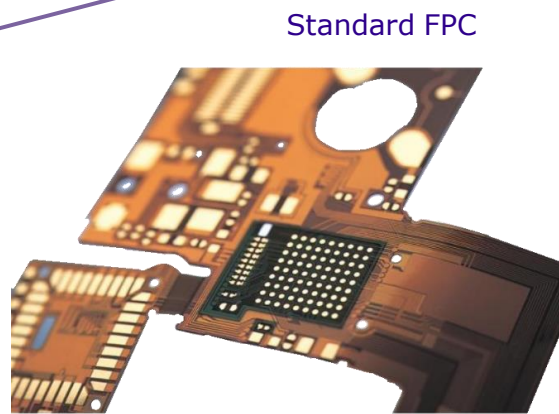
### Contact person for further information:

Mr. Kotaro Umaba (SEPE)  
[umaba-kotaro@sei.co.jp](mailto:umaba-kotaro@sei.co.jp)

- Hohe Funktionalität
- Platzsparend

# FPC

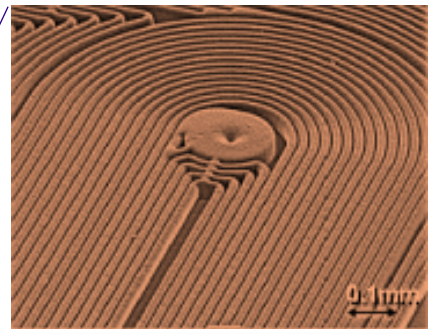
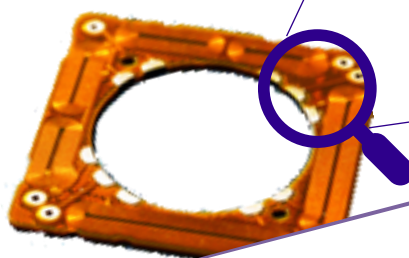
## Flexible Printed Circuits



FPC mit Komponenten



Fine pitch  
Coil



### Produktbeschreibung:



FPC mit SMD, Tape und mehr



Verschiedene Anschlussmöglichkeiten



Einlagig, zweilagig und mehrlagig



Hochwertiges Material  
-40°C bis 150°C



Fine-Pitch ermöglicht Leiterbahnen  
mit hoher Dichte und hohem  
Aspektverhältnis

### Ansprechpartner für weitere Informationen:

Hr. Kotaro Umaba (SEPE)  
[umaba-kotaro@sei.co.jp](mailto:umaba-kotaro@sei.co.jp)